



R-JetTek[®]
Inkjet Technology Solutions

HP 970/971 Refill Kit Instructions

#5100RK

Specific Cartridges: HP970/971 Starter, XL, Standard



Kit Parts:



Ball Plug Remover
Part#1110



Ball Plug Tool
Part# 1103



4-1.5" Blunt Tip Needles
Part# 1904



4-60ml Syringes
Part# 1952



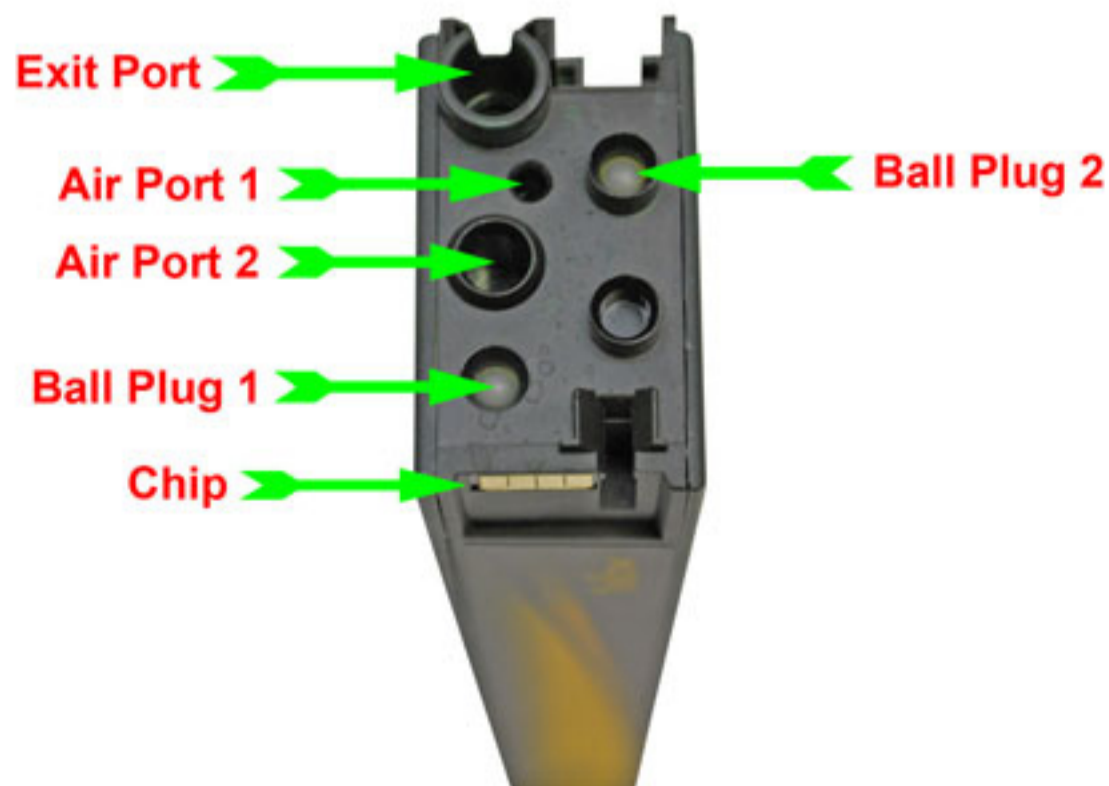
20-Black Ball Plugs
Part# 1914



16oz. Black Pigment Ink

8oz. Each Cyan, Magenta, Yellow
Pigment Ink

Cartridge Parts and Function:



Refill Process:

Please read through the instructions completely before beginning refilling!

IMPORTANT:

You must have **2 sets of 970/971 cartridges to refill**. This is due to the fact that an empty cartridge cannot be refilled and the same cartridge returned to the printer. A second refilled cartridge must be used. This method of **Leap-Frogging** the cartridges is necessary to fool the printer into using refilled cartridges.

It is suggested that the second set of cartridges be the **XL** cartridges, due to the fact that they hold a large amount of ink and are the more affordable choice. The **STARTER CARTRIDGES** that came with your printer hold almost as much ink as the **CMY XL** cartridges and **CAN** be used as your second set. The **STANDARD SIZE** cartridges hold **less than half** the amount of ink as the **XL's** and **Starters**. If you are refilling **STANDARD SIZE** cartridges, only **Ball Plug 1** needs to be removed, this is because the chamber under **Ball Plug 2** does not contain ink in the **STANDARD size CMY cartridges**. The **Black STANDARD** cartridge **IS** filled in both chambers, so **BOTH Ball Plugs** will need to be removed.



Fig.1

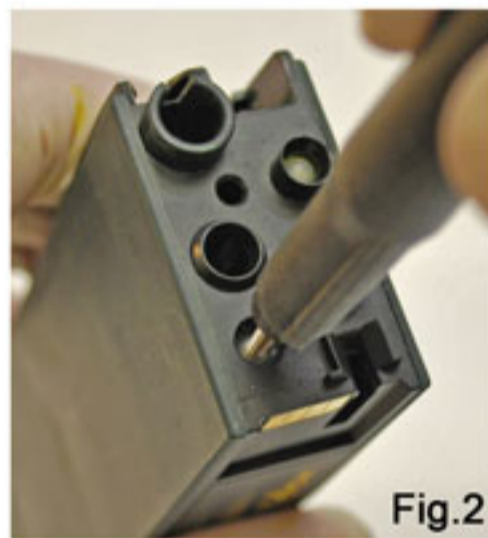


Fig.2

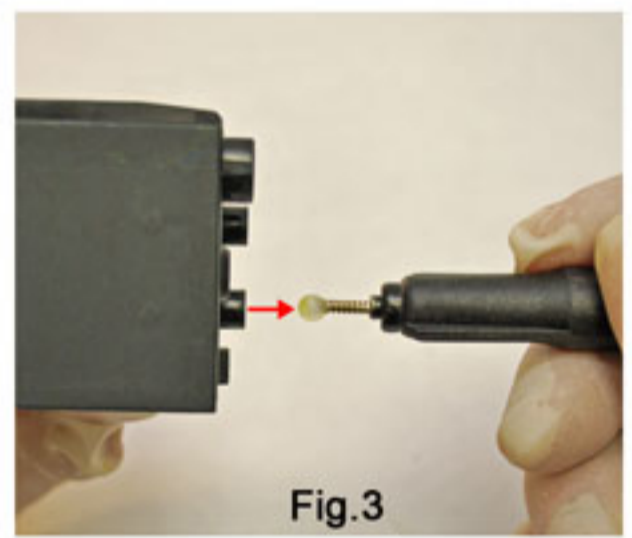


Fig.3

Step 1) Ball Plug Removal:

To remove the **Ball Plugs** Use the **Ball Plug Removal Tool**. It is important to align the tip of the **Ball Plug Removal Tool** into the very center of the **Ball Plug** (Fig.1) This is to avoid damaging the Cavity that the **Ball Plug** resides in. **If not done properly the cartridge will leak and cannot be used.**

Once the **Ball Plug Remover** is centered on the **Ball Plug**, press down and screw the tip of the **Ball Plug Remover** into the **Ball Plug** making sure to keep it straight. Continue until the threads are about 1/2 way into the **Ball Plug** (Fig.2) Next, Hold the cartridge firmly and pull straight out on the **Ball Plug Remover** and the **Ball Plug** will be removed (Fig.3). The principle is the same as removing a wine cork, take your time. **This is the most important step in the process!**

Use a pair of needle nose pliers to remove the **Ball Plug** from the **Ball Plug Remover** by clamping the **Ball Plug** with the pliers and unscrewing the **Ball Plug** from the **Ball Plug Remover** (Fig.4). **Be care full not to damage the threads.** Repeat for **Ball Plug 2**.

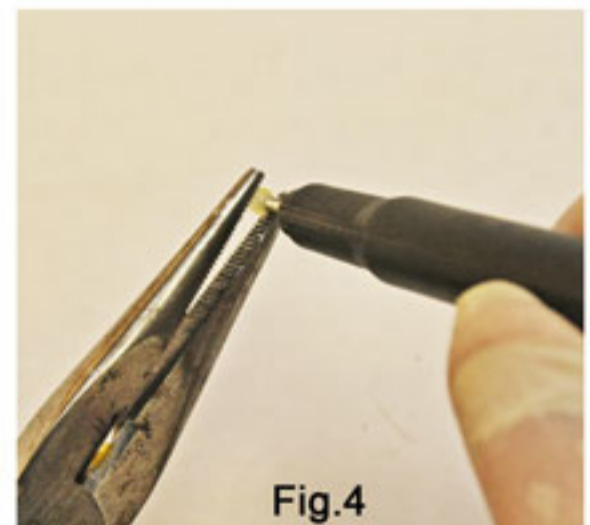


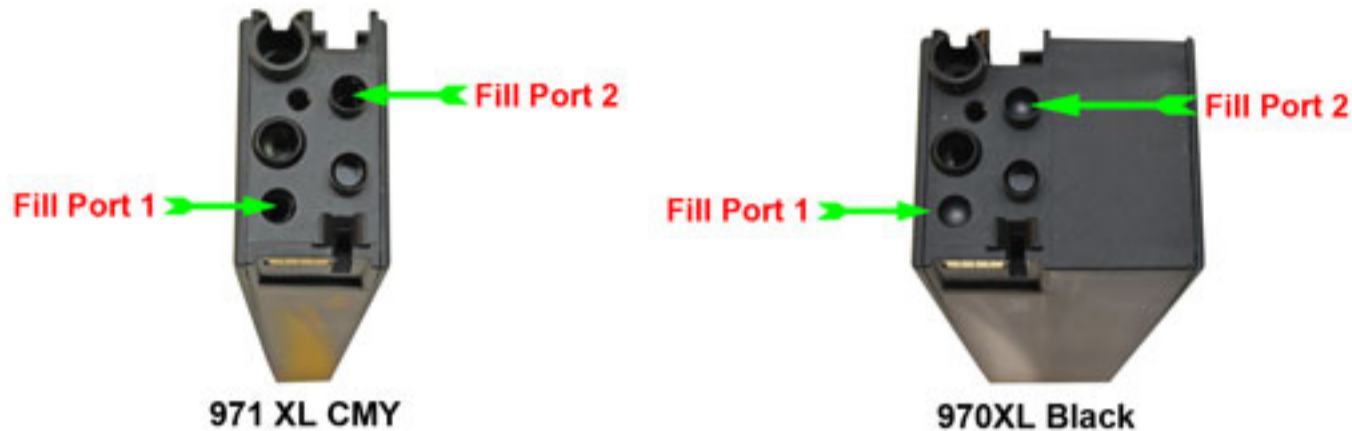
Fig.4

Step 2: Refilling

The Refill Kit includes **4-60ml Syringes** and **4-Blunt needles**. One for each color. Attach the needles to the syringes.

The 970/971 cartridges have 2 **Fill Ports**, one on the left and one on the right. We will refer to the **Fill Ports** as **Fill Port 1** (which you removed **Ball Plug 1** from) and **Fill Port 2** (which you removed **Ball Plug 2** from).

The 970XL Black Cartridge has a very large **Fill Port 2**, this is where the majority of the ink resides.



It is important to split the total ink fill volume between **Fill Ports** when refilling.

When Refilling always start with Fill Port 2, Then go to Fill Port 1.

Fill Port 1 on ALL cartridges holds a maximum of 43ml of ink, so all remaining ink must be injected into **Fill Port 2**

To Refill, stand the cartridge with the **Fill Ports** facing up, fill the syringe with ink and insert the Blunt Needle Into **Fill Port 2**. Insert the needle about half way into the **Fill Port** and Inject all but 43ml of the total fill volume into **Fill Port 2** (Fig.5). Inject the total remaining ink into **Fill Port 1** (Fig.6). Fill slowly so that the ink does not foam up. If ink starts to bubble out of the **Fill Ports** let the cartridge rest a few minutes, then continue. **Note: You will have to refill the syringe multiple times to achieve total fill amounts.** Total Fill amounts are listed below:



970K Starter: 118ml Total, Fill 75ml in Fill Port 2, Then 43ml in Fill Port 1
 971C Starter: 107ml Total, Fill 64ml in Fill Port 2, Then 43ml in Fill Port 1
 971M Starter: 99ml Total, Fill 56ml in Fill Port 2, Then 43ml in Fill Port 1
 971Y Starter: 99ml Total, Fill 56ml in Fill Port 2, Then 43ml in Fill Port 1

970K Standard: 82ml Total, Fill 42 in Fill Port 2, Then 40ml in Fill Port 1
 971C Standard: **DO NOT FILL PORT 2**, Inject 43ml in Fill Port 1
 971M Standard: **DO NOT FILL PORT 2**, Inject 40ml in Fill Port 1
 971Y Standard: **DO NOT FILL PORT 2**, Inject 41ml in Fill Port 1

970XLK: 250ml Total, Fill 207ml in Fill Port 2, Then 43ml in Fill Port 1
 971XLC: 109ml Total, Fill 66ml in Fill Port 2, Then 43ml in Fill Port 1
 971XLM: 102ml Total, Fill 59ml in Fill Port 2, Then 43ml in Fill Port 1
 971XLY: 104ml Total, Fill 61ml in Fill Port 2, Then 43ml in Fill Port 1

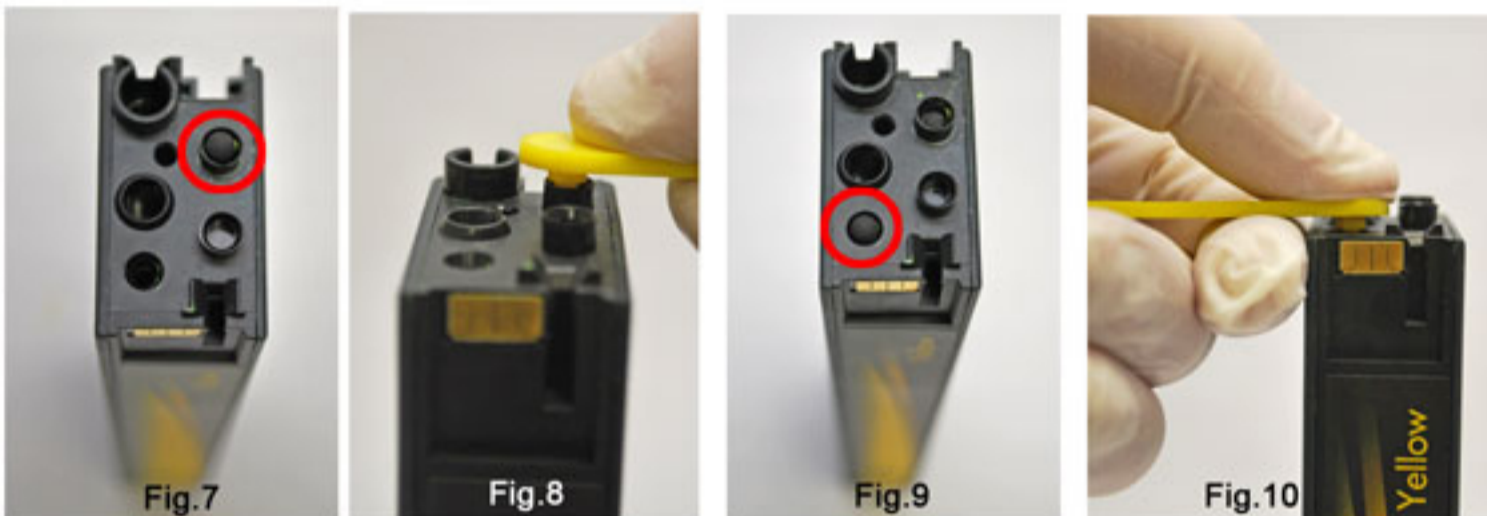
Step 3: Ball Plug Replacement

Now that the cartridge is filled the last step is to replace the **Ball Plugs**. The **Ball Plugs** included in your Refill Kit are made of rubber, and seal much better than the original plastic plugs. They are also much easier to remove when you go to refill the cartridge again.

Ball Plugs Should Not be reused once they have been removed. They may not seal properly.

To replace the **Ball Plugs**, first place a **Ball Plug** into **Fill Port 2** (Fig.7).. Use the **Ball Plug Tool** to push the **Ball Plug** Firmly in place (Fig.8). You will feel/hear it pop into place. Next place a **Ball Plug** into **Fill Port 1** (Fig.9). The cavity for **Fill Port 1** is a bit deeper than **Fill Port 2**, so you will need to make sure to press it firmly in place as well. (Fig.10).

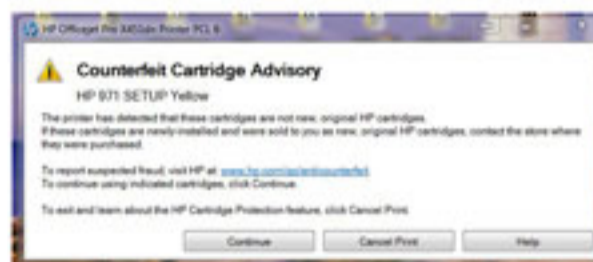
Once the **Ball Plugs** are in place, wipe any excess ink from the cartridge, and it is ready to use!



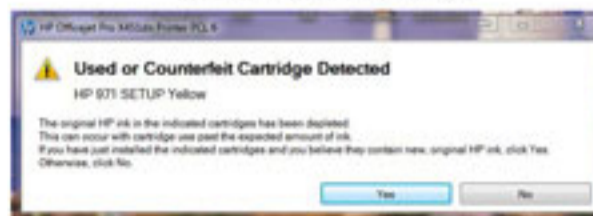
As with most HP REFILLED Cartridges, you will receive pop-up messages on your screen after inserting the refill. Follow the instructions below for these screens. Ink levels may or may not show on the ink monitor, depending on the cartridge, and model of printer. The printer will stop printing and will not allow further printing once the cartridge is truly empty. This is to prevent damage to the printheads. So, there is no reason to worry about ink levels or ruining the printer due to it running out of ink.



Click OK



Click Continue



Click Yes



Click OK

Questions? Give us a call at 1-800-688-0129 to speak to a technical representative, or chat with us live online at rjettek.com